



SCTE · ISBE

SCTE Alaska Chapter Presents

Social Distancing Social Event

Join us in our telecom scavenger hunt

This is a great chance to have fun with the whole family, socializing while we social distance. We will be giving away prizes for our telecom scavenger hunt, which runs May 15th- June 1st. Gather as many pictures of scavenger hunt items as possible and get raffle tickets for a chance to win gift cards. Look for more announcements from our social committee with further details.

SCTE Alaska Vendor Show

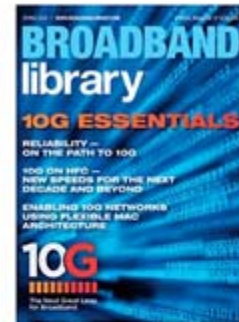
We are sad to announce that our vendor show will not be taking place this May as previously scheduled. We are working closely with our vendors and other chapter leaders to determine when we will be able to reschedule this event.

We appreciate your understanding as we navigate through these trying times together. We will be keeping you all updated as we progress through our planning, and know when we will be able to schedule our next vendor day show.

BROADBANDLIBRARY.COM

BROADBAND library®

OFFICIAL
MAGAZINE OF
SCTE•ISBE



FOLLOW THE LEADER
Leading the Way in 2020
and Beyond
MARK L. DZUBAN

FOCUS ON 10G ESSENTIALS



Reliability:
On the Path to 10G
DR. ALBERTO CAMPOS

10G Technology
Network Virtualization
ASAF MATATYAOU

Enabling Low Latency
DOCSIS to Improve
Latency and
Bandwidth Utilization

ROBERT FERREIRA
BARAK HERMESH



IP ADDRESS
Network Fundamentals
Key to Understanding and
Solving IP Mysteries
PATRICK HUNTER





NERDY LITTLE SECRETS

Ever Wonder How
Machines Learn?

**10G on HFC — New
Speeds for the Next
Decade and Beyond
— A Short Story**

TOM CLOONAN

**Enabling 10G
Networks Using
Flexible MAC
Architecture**

COLIN HOWLETT



DOCSIS ONLINE
Evolve or Die: Can DOCSIS 4.0
Compete with Fiber?
BRADY VOLPE

GUEST AUTHOR
Using Passive Radar in
Cable Operations
TOM WILLIAMS

ON THE SHELF
Products and Services

LESLIE ELLIS

MAKING THE GRADE

The Best Laid Plans...
DAVID RIRIE

PRIMARY SOURCE

Understanding Band Splits
In Two-Way Networks
RON HRANAC



A NOVEL APPROACH

Staying Put: How big changes
in demography are affecting
cable subscriber growth
STEWART SCHLEY



CHARTING THE COURSE

Extended Spectrum
Beyond 1.2 GHz —
The Odds of a Predicted
Outcome are Favorable
NICK SEGURA

FIBER SOURCE

The Digital HFC—
A Path to 10G
STEVEN HARRIS



THE FUTURIST

Battle Royale:
FDX vs ESD —
Which Tastes Great And
Is Less Filling?
JEFF FINKELSTEIN

TESTING IN PROGRESS

CableLabs® Outage Reduction
Taskforce Review —
Plant Protection (Part Two)
H. MARK BOWERS



DATAPPOINTS

Running the Numbers
STEWART SCHLEY

**SCTE•ISBE
BULLETIN BOARD**



**PHANTOM'S
FINAL WORD**

Remembering
THE PHANTOM

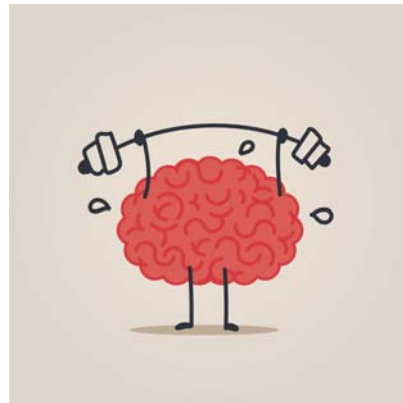
READ THESE ARTICLES AND MORE AT BROADBANDLIBRARY.COM

To get involved in the Alaska Chapter, contact us at thealaskachapter@gmail.com.

Just wanted to share the new SCTE membership brochure:

http://www.scte.org/SCTEDocs/Membership/SCTE21114_MemberBrochure_FNL.pdf

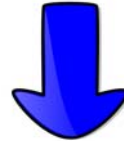
Train Your Brain



The [micro-lessons are awesome!](#) They will work well for the busy technical and non-technical folks alike - Mike Snyder

Speaking of MicroLessons, they're a complimentary part of our membership along with Primers, MicroLearnings and LightningMods. You can go to the [SCTE.org](http://www.scte.org) website for more information and a list of programs currently available to members.

Check out all of this training! 🤩



Topic	Reading RSSI Signals for Home Wi-Fi Troubleshooting
Presenter	Justin Angelone with GCI
Date & Time	April 29th, 12-1pm RSSI Basics Wed, Apr 29, 2020 12:00 PM - 1:00 PM (AKDT)
	Please join my meeting from your computer, tablet or smartphone. https://global.gotomeeting.com/join/164078261
How to Attend	You can also dial in using your phone. United States: +1 (786) 535-3211
	Access Code: 164-078-261
	New to GoToMeeting? Get the app now and be ready when your first meeting starts: https://global.gotomeeting.com/install/164078261

Description of Training	This training will cover how to gather RSSI and use it to determine in-home Wi-Fi issues like coverage and speed
Topic Presenter Date & Time	Meter Use and Basics Jayson McDonald with GCI May 6th, 12-1pm Meter Use and Basics Wed, May 6, 2020 12:00 PM - 1:00 PM (AKDT)
How to Attend	Please join my meeting from your computer, tablet or smartphone. https://global.gotomeeting.com/join/506757533 You can also dial in using your phone. United States: +1 (646) 749-3112
Description of Training	Access Code: 506-757-533 New to GoToMeeting? Get the app now and be ready when your first meeting starts: https://global.gotomeeting.com/install/506757533 This training will cover best practices for meter use

Topic	Best Practices for Testing Speeds in a Customer Home
Presenter	Erwin Otei with GCI
Date & Time	May 13th, 12-1pm Best Practices for Testing Speeds in a Customer Home Wed, May 13, 2020 12:00 PM - 1:00 PM (AKDT)
	Please join my meeting from your computer, tablet or smartphone. https://global.gotomeeting.com/join/472842453
How to Attend	You can also dial in using your phone. United States: +1 (571) 317-3122
	Access Code: 472-842-453
	New to GoToMeeting? Get the app now and be ready when your first meeting starts: https://global.gotomeeting.com/install/472842453
Description of Training	This training will cover best practices for testing and troubleshooting speeds (specifically higher speeds like GIG) in a customer's home

Thank you for your continued support of the SCTE ISBE and your Alaska Chapter!

For more information on SCTE Certifications, please

visit: www.scte.org/certification

More from National

Publications and Education Resources such as the [SCTE Bookstore](#), [Primer Series](#), or [LiveLearning Webinars™](#) are filled with in-depth information where you can immerse yourself in existing and new cable technology.

Knowledge and Information Resources such as the [Job Aids and Mobile Apps](#), [Pocket Guides](#) or [SupplierConnect](#) are quick sources for facts, product information and tips to help you excel doing daily job tasks.

Quote of the Month

***“When you can’t find the sunshine, be the
sunshine”***



VectorStock®

VectorStock.com/493377



This email was sent to jblackson@gci.com

[why did I get this?](#) [unsubscribe from this list](#) [update subscription preferences](#)

The Alaska Chapter SCTE · PO Box 231432 · Anchorage, Ak 99523-1432 · USA

